



COĞRAFYA EĞİTİMİ DERNEĞİ GEOGRAPHY EDUCATION ASSOCIATION

TURKEY NATIONAL EARTH SCIENCE OLYMPIAD'18

**To Participate in The 12th International Earth Science Olympiad
in Kanchanaburi, Thailand**



***The theme of this year's Olympiad is
"Earth Science for All"***

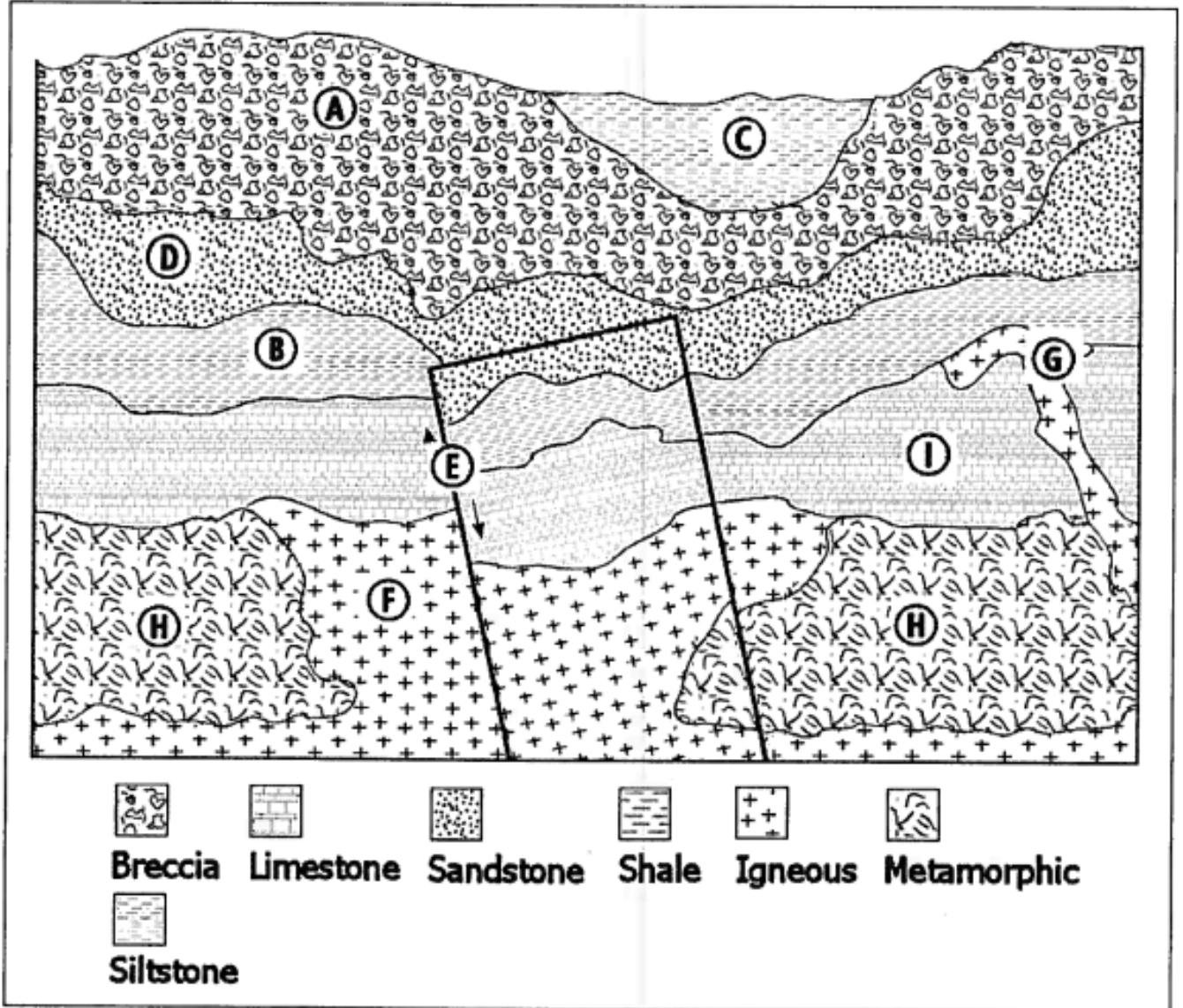


SAMPLE QUESTIONS

- 1. The hydrologic cycle constantly recycles the available water resources on Earth. Which of the following factors is the key driving force behind the continued functioning of the hydrologic cycle?**
(A) The amount of insolation received in a region
(B) The volume of water in a region
(C) The atmospheric pressure differences in a region
(D) The density of the water in a region
- 2. Which of the following statements is NOT correct in respect to the Intertropical Convergence Zone (ITCZ)?**
(A) It is a discontinuous belt of thunderstorms.
(B) It marks the convergence of the Northern and Southern Hemisphere trade winds.
(C) It shifts north and south with the seasons.
(D) It represents a permanent low pressure area centered over the Equator.
- 3. The geometric arrangement of the Earth – Moon – Sun that periodically makes the Moon seem dark is termed**
(A) crescent moon
(B) full moon
(C) new moon
(D) quarter moon



COĞRAFYA EĞİTİMİ DERNEĞİ GEOGRAPHY EDUCATION ASSOCIATION



4. Based on the cross section diagram shown above, place the strata lay down sequence in chronological order of oldest to youngest.
- (A) F - H - I - G - B - D - E - A - C
(B) C - A - E - D - B - G - I - H - F
(C) F - H - I - E - G - B - D - A - C
(D) A - C - D - B - E - I - G - F - H
5. What does letter E represent?
- (A) An angular unconformity
(B) A fault
(C) A metamorphic boundary
(D) A regression sequence